

**A.R.C.
LASER**

enlighten your surgery.

FOX

810
nm

980
nm

1064
nm

12 W
980 nm

VERSATILE

TOUCH
SCREEN

PORTABLE

FOX 810/980/
1064/1470 nm

IDEAL FOR:

- DENTAL
- ENT
- DERMATOLOGY
- GYNECOLOGY
- SURGERY / VET



CALIBRATION at the distal tip of the fiber = safe and accurate treatments

- The new FOX laser can calibrate the output at the distal end of the fiber. The laser will automatically adjust to deliver the selected power displayed.
- Change fibers and calibrate to the true output
- This sets a world wide standard

CALIBRATION ASSURES SAFETY

Power selected on the display:	6.50 W
-----------------------------------	--------

Fiber transmission	93.00 %
-----------------------	---------

Verified power output:	6.02 W
---------------------------	--------

Calibrate for safety reasons!



DIODE LASER

VERSATILE

- 12 W output at distal tip (980nm)
- Micro pulse settings minimum 100 μ s
- Fiber delivery for maximum maneuverability
- Green aiming beam for enhanced visibility
- Small, lightweight and transportable



First laser with a green aiming beam:
Highly visible at all treatment fields.

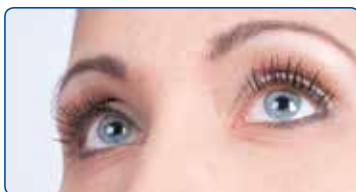


Ergonomically designed hand pieces and delivery systems enables surgeons multiple treatment options. With the patented fiber connector, fiber change is quick and easy without compromising performance. A selection of disposable or reusable attachments are available.

Select your Application: Dermatology, Surgery, Ophthalmology, Aesthetics, Dental, ENT etc.



VARIOUS APPLICATIONS



- Aesthetic
- Ophthalmology
- ENT
- Dental
- Surgery
- Gynecology
- Veterinary

Not without my FOX!

More Comfort =
Safety for both
patients and surgeon.

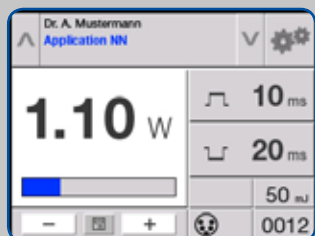


Precise incision

Coagulation

Ablation

Tissue remodeling



TOUCH-SCREEN

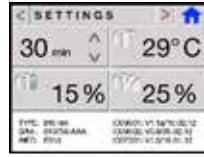
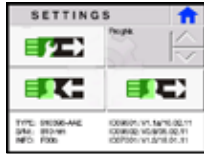
Selection of treatment parameters is easy with the "high-light and touch" screen display. Power selection is as easy as never before with the new status bar.

VIDEO

The FOX video library can be accessed from a USB Flash Drive and played on the display screen, including the latest surgical procedures.



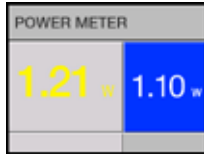
FOX meets the needs of modern surgeons. The cooperation of designers and physicians created the most advanced and affordable diode laser.



TOUCH SCREEN – Treatment at your finger tips.



Intuitive screen design.



*Expand your office services with the FOX.
Unlimited benefits are offered by the FOX.
Any suggestions or design proposals of tips
are welcome.*

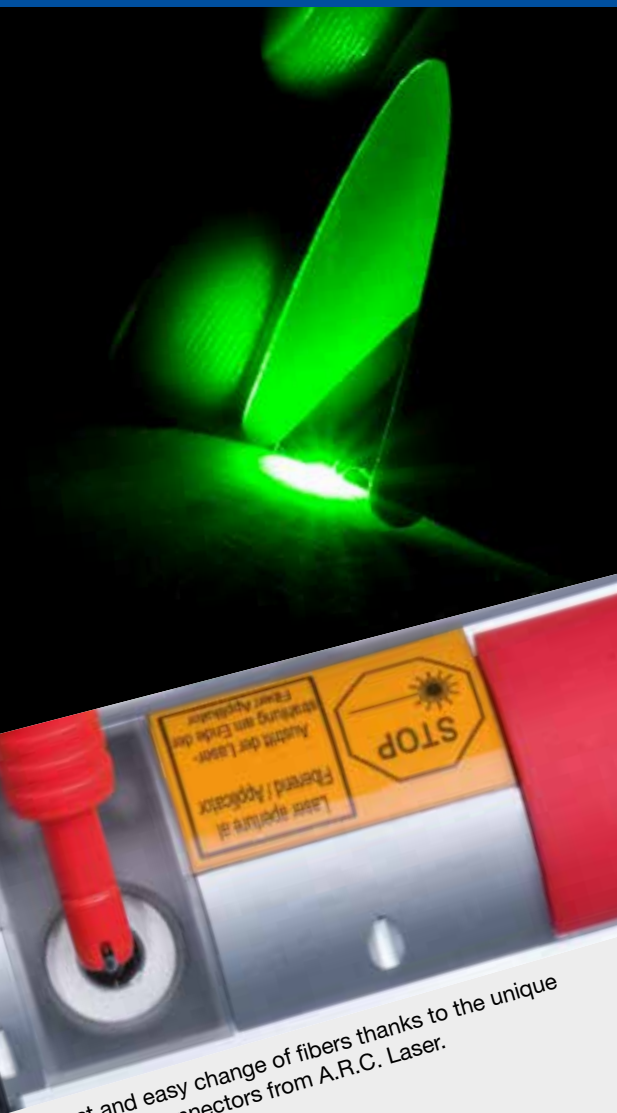


- Green aiming beam for pinpoint accuracy
- Store up to 99 treatment programs in memory
- Battery operation enables flexible treatment sites
- Superior performance and maximum utilization
- Video library is available via USB flash drive



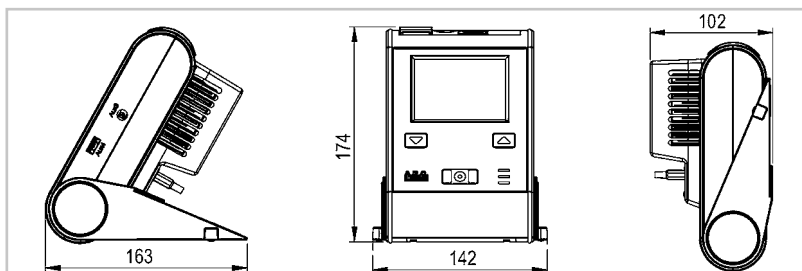
WAVELENGTH OPTIONS:





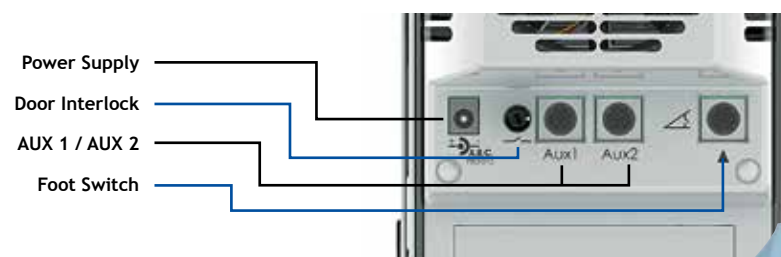
Fast and easy change of fibers thanks to the unique patented connectors from A.R.C. Laser.

The FOX laser and its accessories are stowed in a durable carrying case.



Dimensions FOX

Rear Connectors FOX

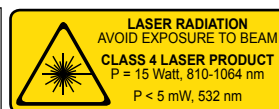


SPECIFICATIONS

Wavelength/Power*	810 nm	8 Watt
	940 nm	4 Watt
	980 nm	12 Watt
	1064 nm	10 Watt
Pulse Width / Adjustable	0.1 ms to cw	
Pulse Intervall	0.1 ms to cw	
Aiming Beam	Green 532 nm, < 1 mW	
Dimensions (WDH)	142 x 163 x 174 mm	
Weight	1.2 kg	
Power Supply	Integrated Batteries, rechargeable	

* at the distal end

Specify wavelength at order. Changes in design and specifications to enhance performance will be incorporated without any further notice.



Your local distributor: